



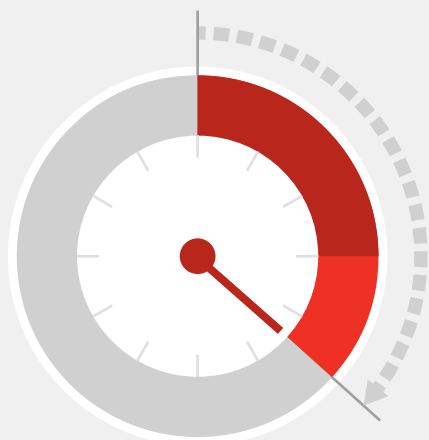
Where Are the HIDDEN COSTS IN YOUR DC?

With the rise of omni-channel fulfillment, today's distribution centers (DCs) are more productive and efficient than ever before—right?

The truth is a little more complicated.

The Clock is Ticking

It's an unavoidable fact in all jobs: **Not all “work” hours** are actually spent working.



22

Average number of **unproductive minutes** in a warehouse worker's 8-hour shift

7

Minute increase since 2012

Picking Errors Are a (Big) Problem—Part 1

There are **far more** of them than you would imagine.

134

Number of mispicks
per week in average DC



Picking Errors Are a (Big) Problem—Part 2

They **cost** distribution centers **big bucks**.

\$201,000

Dollars the average DC loses
in picking errors every year



Bigger Isn't Necessarily Better

Compared to small companies (<1,000 employees), large companies (5,000+ employees) have **more unproductive time** per shift, **more mispicks** per week and **more costly mispicks**.



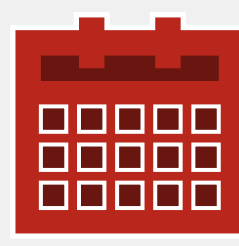
AVERAGE UNPRODUCTIVE TIME PER SHIFT

Large Companies: 25 min
Small Companies: 19 min



AVERAGE MIS PICKS PER WEEK

Large Companies: 228
Small Companies: 77



AVERAGE ANNUAL COST OF MIS PICKS

Large Companies: \$281,000
Small Companies: \$101,000



For more information
www.honeywellaidc.com

Honeywell Safety and Productivity Solutions
9680 Old Bailes Road
Fort Mill, SC 29707
800-582-4263
www.honeywell.com

Source: Honeywell Distribution Center Study Market Research Report, prepared by Waggener Edstrom Insight & Analytics, August 2015. The Report surveyed 263 operations and IT managers from organizations with more than 500 employees in the United States and Europe.

Unlocking Hidden Costs Infographic | Rev A | 03/17
© 2017 Honeywell International Inc.

Honeywell
THE POWER OF **CONNECTED**